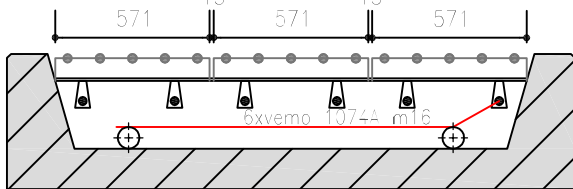
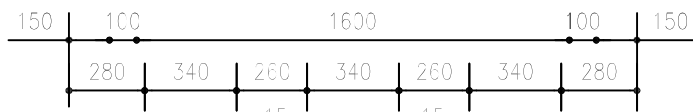
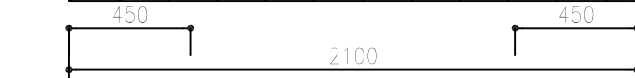


Bovenaanzicht

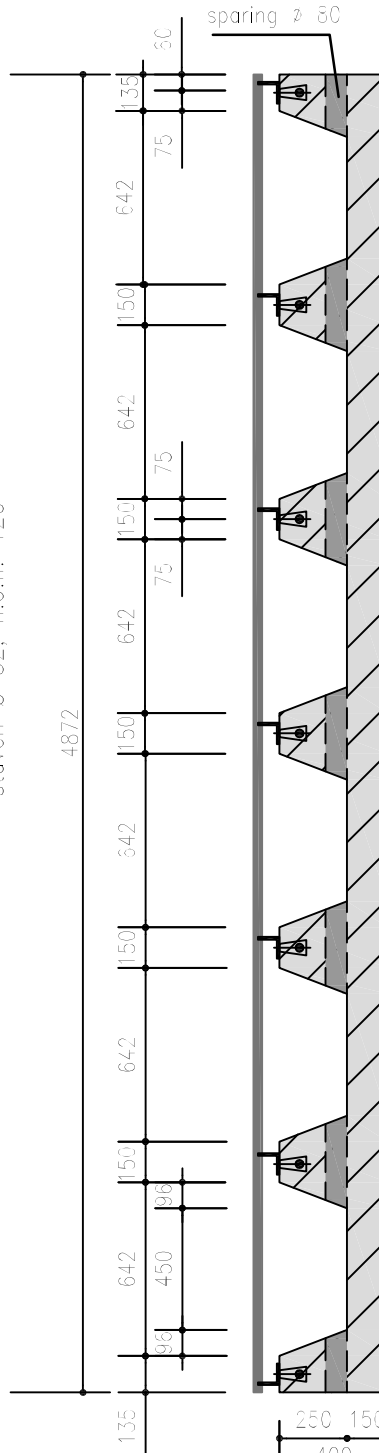


Dwarsdoorsnede

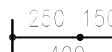


staven \varnothing 32, h.o.h. 120

4872



Langsdoorsnede



sparing \varnothing 80

135

642

150

642

150

642

150

642

150

642

135

75

75

75

75

75

75

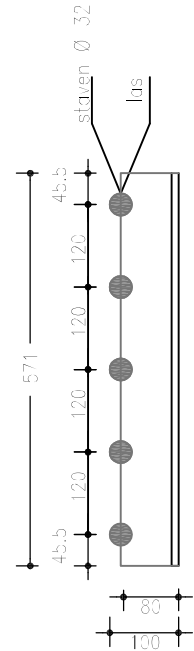
96

642

96

450

150



Aanzicht L 80.80.10

Doorsnede L 80.80.10

Opmerkingen
 las Δ 6
 al het staalwerk thermisch
 verzinkt volgens
 NEN1275, NEN 2693, NEN 5520

b7v32 Veerooster voor
 Zwaarverkeer